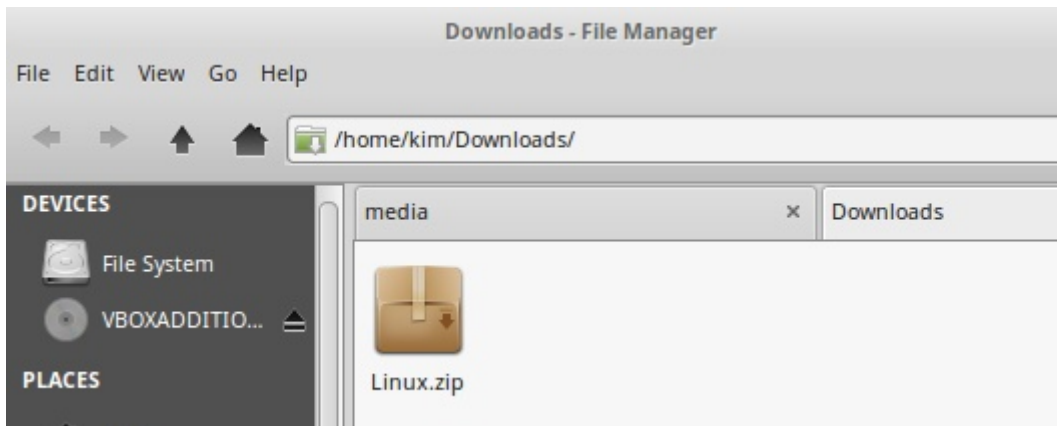
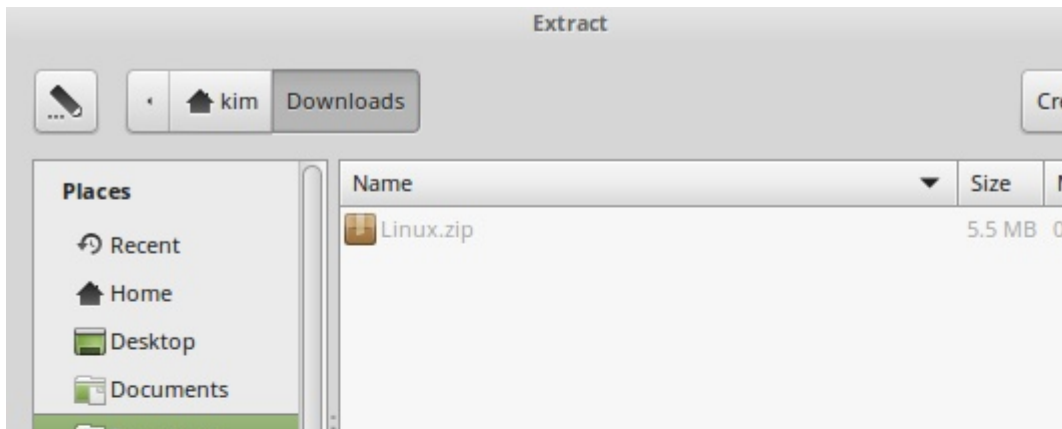


Before installing Genome Mate Pro make sure your system meets the requirements for XoJo applications. http://docs.xojo.com/index.php/System_requirements
64 bit versions of Linux will have to install 32 bit libraries before Genome Mate Pro will work. To do this copy this into your terminal:

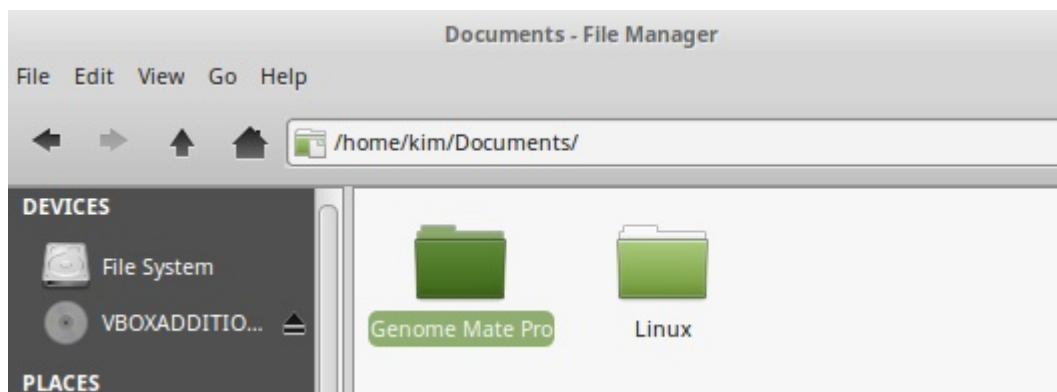
```
sudo dpkg --add-architecture i386  
sudo apt-get update  
sudo apt-get install ia32-libs-multiarch  
sudo apt-get install libc6:i386
```



1. Download Genome Mate Pro to your downloads folder.

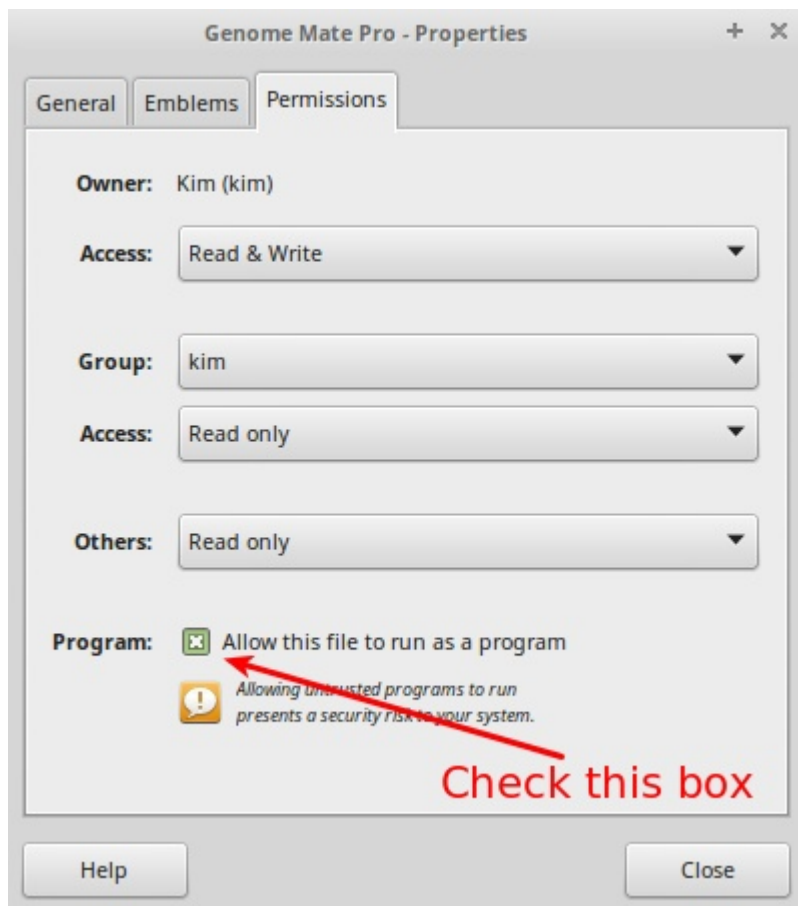


2. Double click on the file linux.zip. When archive manager opens click on extract and select the folder you want Genome Mate Pro to be located in.



3. In this example I chose my Documents folder as the extraction destination. After closing the archive manager go to the Documents folder. Here you will find a folder

named Linux. Open this folder and copy the folder named Genome Mate Pro into your Documents folder. You can now delete the Linux folder.



4. Open the Genome Mate Pro folder and right click on the file named Genome Mate Pro. Select the properties option, then go to the permissions tab. Click the box Allow this file to run as a program. Then double click the icon again to run Genome Mate.

Alternatively you can install Genome Mate Pro in the terminal. If your file manager has the option right click in the Genome Mate Pro folder and select open terminal. Otherwise open the terminal from your application menu and run:
`cd /home/yourusername/Documents/Genome Mate Pro`

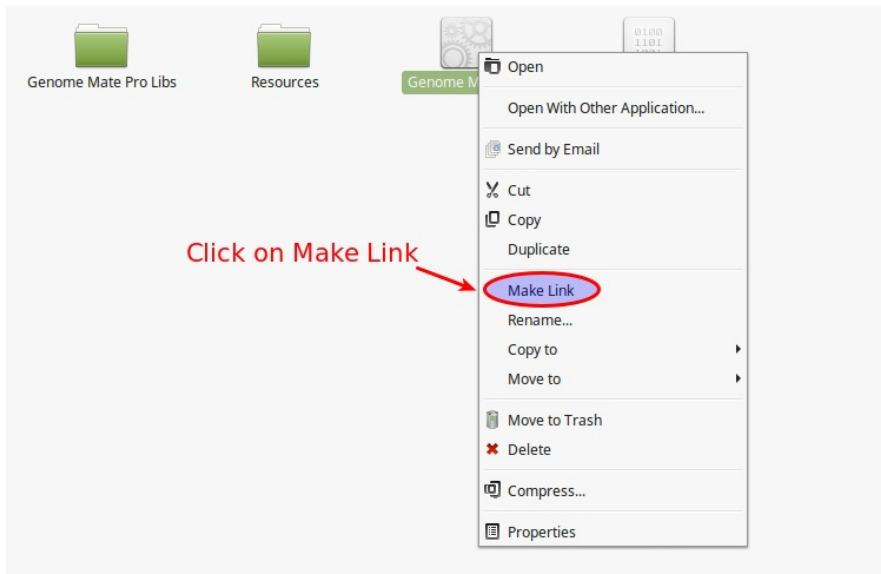
Run the command:

```
sudo chmod -R ugo+rw "Genome Mate Pro"
```

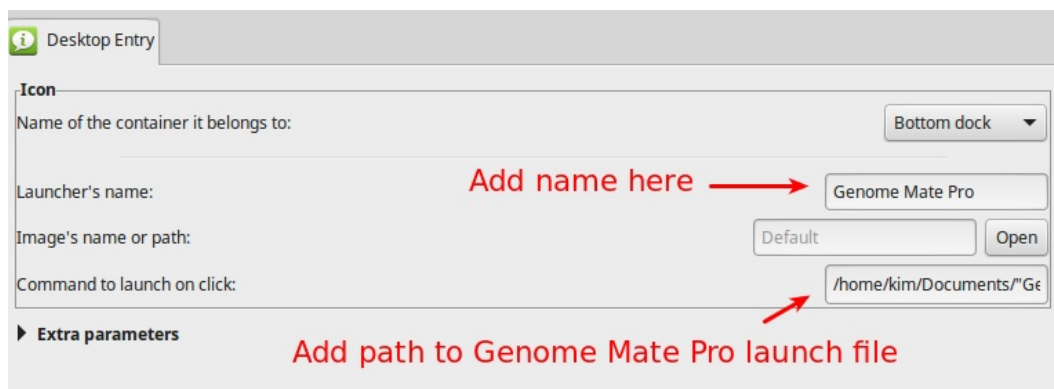
After file permissions have been changed copy this command into the terminal to install Genome Mate Pro:

```
./"Genome Mate Pro"
```

File window will open and ask where to save the database file. After selecting where your database file will be kept Genome Mate Pro will open.



To create a desktop shortcut icon for launching Genome Mate Pro, right click on the Genome Mate Pro icon. Then select Make Link. Copy the new icon file to your desktop.



If you use Cairo Dock select add custom launcher. Add Genome Mate Pro as the launcher name. In the command to launch enter:

```
/home/yourusername/Documents/"Genome Mate Pro"/"Genome Mate Pro"
```

Make sure to change "yourusername" to what you use on your computer.

From here follow the instructions in the manual for setting up your database and profiles.